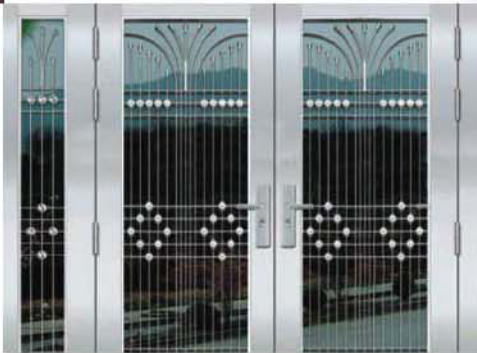
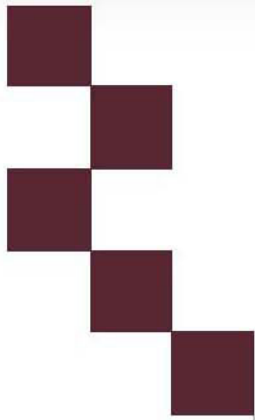
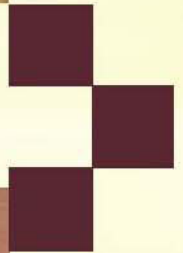


Doors



- Steel Door
- Steel & Aluminum Door
- Steel Glass Door
- Stainless Steel Door
- Luxury Copper Door
- Steel Wood Door
- Luxury PVC Wooden Door
- PVC Wooden Door
- American Steel Door
- HPL Door
- Melamine Door
- Bathroom Door
- Turkey Door



Turkey Door

Laminox Eco Panel Door



Laminox Eco Panel Door With Chrome



Doors

Turkey Door

Laminox Eco Panel Door



(A)Rustic (B)Black Walnut



(A)Rustic (B)Black Walnut



(A)Rustic (B)Black Walnut



(A)Rustic (B)Black Walnut



(A)Rustic (B)Black Walnut



(A)Rustic (B)Black Walnut

Turkey Door

Laminox Eco Panel Door



TD-SH24



TD-SH25



TD-SH26



TD-SH27



TD-SH28



TD-SH29



TD-SH30



TD-SH31



TD-SH32

Classic Door



TD-SH33



TD-SH34

Doors

Turkey Door

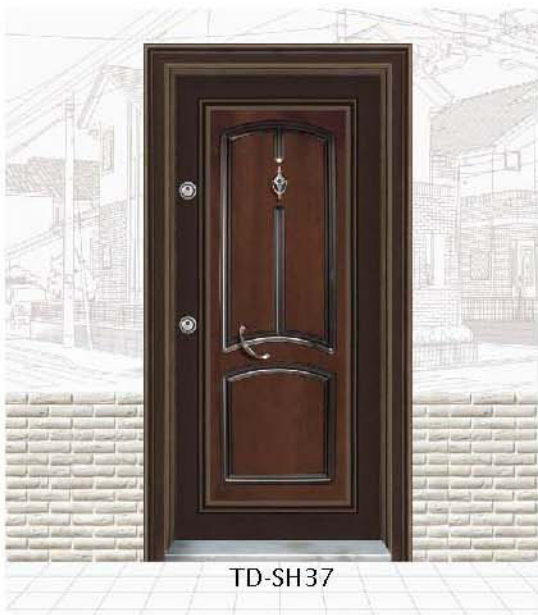
Classic Door



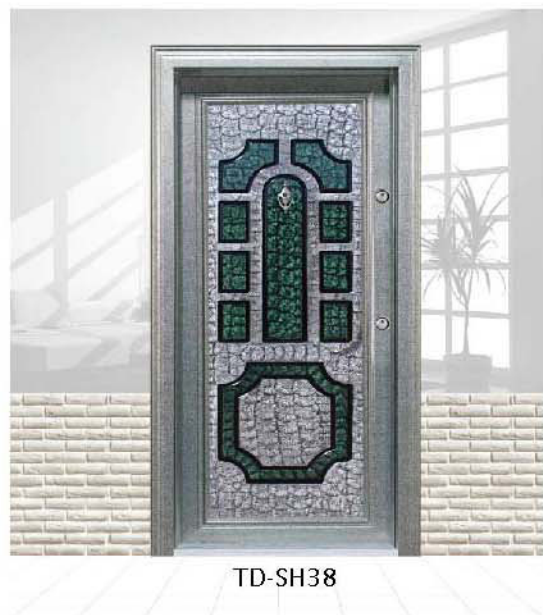
TD-SH35



TD-SH36



TD-SH37



TD-SH38



TD-SH39



TD-SH40



TD-SH41



TD-SH42



TD-SH43

Turkey Door

Classic Door



TD-SH44



TD-SH45



TD-SH46



TD-SH47



TD-SH48



TD-SH49



TD-SH50



TD-SH51



TD-SH52



TD-SH53



TD-SH54



TD-SH55



TD-SH56



TD-SH57



TD-SH58



TD-SH59



TD-SH60



TD-SH61



TD-SH62



TD-SH63

Doors

Turkey Door

Classic Door



TD-SH64



TD-SH65



TD-SH66



TD-SH67



TD-SH68



TD-SH69



TD-SH70



TD-SH71



TD-SH72



TD-SH73



TD-SH74



TD-SH75



TD-SH76



TD-SH77



TD-SH78



TD-SH79



TD-SH80



TD-SH81



TD-SH82



TD-SH83

Turkey Door

Classic Door



TD-SH84



TD-SH86



TD-SH87



TD-SH88



TD-SH89



TD-SH90



TD-SH91



TD-SH85



TD-SH92



TD-SH93



TD-SH94



TD-SH95



TD-SH96

Material Information

1. Door Frame Specification (Code/Design/Material)

Code	Door Frame Design & Photo	Material Type & Thickness Specification	Door Series
A	 Adjustable Frame	<ul style="list-style-type: none"> ■ 100% Pure MDF ■ $8+7+8=23 \times (15 \times 13) \times (6+8/12) \times 60/80\text{mm}$ 	PVC Wooden Door
B	 Adjustable Frame	<ul style="list-style-type: none"> ■ MDF+Plywood+MDF ■ $8+7+8=23 \times (15 \times 13) \times (6+8/12) \times 60/80\text{mm}$ 	PVC Wooden Door
C	 Adjustable Frame	<ul style="list-style-type: none"> ■ MDF+Finger Wood+MDF ■ $5+12+5=22 \times (15 \times 13) \times (6+8/12) \times 60/80\text{mm}$ 	PVC Wooden Door
D	 Adjustable Frame	<ul style="list-style-type: none"> ■ MDF+Finger Wood+MDF ■ $6+23+6=35 \times (6+12/15) \times 60/80/100\text{mm}$ ■ $6+27+6=39 \times (6+12/15) \times 60/80/100\text{mm}$ 	<ul style="list-style-type: none"> ■ PVC Wooden Door ■ Veneer Painting Door
E	 Adjustable Frame	<ul style="list-style-type: none"> ■ MDF+Finger Wood+MDF ■ $6+12+6=24 \times 12 \times (6+12/15) \times 60/80/100\text{mm}$ 	Veneer Painting Door
F	 Adjustable Frame	<ul style="list-style-type: none"> ■ 100% Pure Solid Wood ■ Red Walnut □ Customized ■ $35 \times (30+60/70) \times 10/12/15/18\text{mm}$ □ $40 \times (30+60/70) \times 10/12/15/18\text{mm}$ 	Veneer Painting Door
G	 Adjustable Italy Frame	<ul style="list-style-type: none"> ■ 100% Pure MDF ■ $12+5+15+5=37 \times (6+15) \times 70/100$ ■ $12+6+15+6=39 \times (6+15) \times 70/100$ 	PVC Wooden Door
H	 Adjustable Italy Frame	<ul style="list-style-type: none"> ■ MDF+Finger Wood+MDF ■ $12+5+15+5=37 \times (6+15) \times 70/100$ ■ $12+8+12+8=40 \times (6+15) \times 70/100$ 	PVC Wooden Door
I	 Romania Frame	<ul style="list-style-type: none"> ■ MDF+Finger Wood+MDF ■ $12+5+15+5=37 \times 8 \times 60\text{mm}$ 	PVC Wooden Door
J	 Wood Plastic Frame	<p>Door Jamb Size(H&W):</p> <ul style="list-style-type: none"> ■ $2150 \times 100\text{mm}$ □ $2150 \times 120/140/160/180/200/220/240/260\text{mm}$ ■ Architrave: $60 \times 40/42/45\text{mm}$ ■ Door casing can be adjusted 40mm 	<ul style="list-style-type: none"> □ PVC Wooden Door □ Veneer Painting Door ■ Melamine Door ■ ABS Door

Material Information

2. Architrave Design & Size

2.1 MDF



A-SH01

2200x(30+60/80)x6/8mm



A-SH02

2200x(30+70/100)x15mm



A-SH03

2200x80x15mm



A-SH04

2200x80x12mm



A-SH05

2200x60x8mm

2.2 Pure Solid Wood



A-SH06

2200x(30+60)x15mm



A-SH07

2200x(30+60)x15mm



A-SH08

2200x(30+70)x15mm



A-SH09

2200x(30+70)x18mm

2.3 WP(Wood Plastic)



A-SH10

2200x(25+60)x9mm



A-SH11

2200x(25+70)x10mm



A-SH12

2200x(24+75)x10mm



A-SH13

2200x(20+86)x28mm



A-SH14

2200x80x12mm

3. Door Frame Corner Style

1-45 Degree Corner



1-45 Degree Corner



Material Information

4. Door Leaf Edge



1-
Wooden
Material Edge



2-
ABS (Plastic)
Material Edge

5. Inner Filling



1-4pcs MDF Strips Core



2-Honycomb Core



3-Chipboard Core



4-Particle Board Core



5-Solid Wood Core

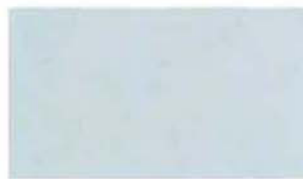


6-Fire Rated Core

6. Glass



G-SH01
(Diamond)



G-SH02
(Frozen)



G-SH03
(Mixed Grid)



G-SH04
(Iced)



G-SH05
(Meteor Shower)



G-SH06
(Brown)



G-SH07
(Sunset)



G-SH08
(Feather)

Material Information

7. Lockset

7.1 Lock Handle



Material Information

7.2 Lock Body



LB-SH50
(Silver Square)



LB-SH50
(Silver Round)



LB-SH58S
(Silver)



LB-SH58G
(Golden)



LB-SH85
(Silver, Golden)

7.3 Lock Cylinder



LC-SH01



LC-SH02

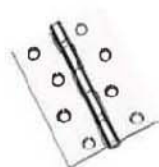


LC-SH03



LC-SH04-No Key
(For Bathroom)

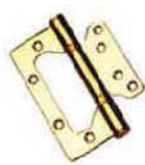
8. Hinge



H-SH01



H-SH02



H-SH03



H-SH04

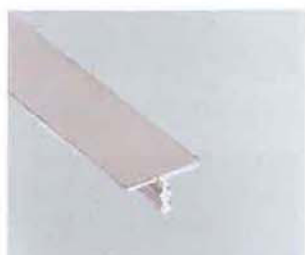


B-SH01

9. Aluminum Decoration Line



SH01 (7.0mm Width)



SH02 (10mm Width)



SH03 (7.0mm Width)



SH04 (7.0mm Width)
Plastic

Material Information

11. Color

P.S.: The exact colour should be accordingly with the real sample

11.1 Smooth Feeling



White Oak-SH01



Light Oak-SH02



Red Oak-SH03



Thai Teak-SH04



Black Walnut-SH05



Walnut Wood-SH06



Red Cherry-SH07



Iron Peach Wood-SH08



White Ash-SH09



Light Maple Wood-SH10



Red Wood-SH11



Mahogany-SH12



Wenge-SH13



Gold Cedar-SH14



Sapele-SH15



Pear Wood-SH16

11.2 Texture Feeling



European Oak



Burma's Oak



Red Spelling Wood
(light)



South Africa Mai Geli



Gold Red Grapefruit



The French Pine



American Walnut



Gold-rimmed
Black Pomelo